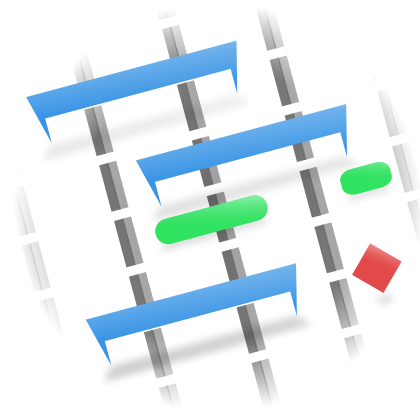


# The Plan Handbook

Dag Andersen



## The Plan Handbook

# Contents

<b>1</b>	<b>Introduction to Plan</b>	<b>8</b>
1.1	Introduction . . . . .	8
1.1.1	. . . . .	8
1.2	Definitions . . . . .	9
1.2.1	. . . . .	9
1.2.1.1	Introduction . . . . .	9
1.2.1.2	Terms . . . . .	9
1.3	Context Help . . . . .	11
1.3.1	. . . . .	11
1.4	Main Work Space . . . . .	11
1.4.1	. . . . .	11
1.4.1.1	Description . . . . .	11
1.4.1.2	The View Selector . . . . .	11
1.4.1.3	Schedule Selector . . . . .	12
1.4.1.4	Status Bar . . . . .	12
1.5	Using the Views . . . . .	12
1.5.1	. . . . .	12
1.5.1.1	Description . . . . .	12
1.5.1.2	Navigation . . . . .	12
1.5.1.3	Editing data . . . . .	13
1.5.1.4	Drag & drop and copy/paste . . . . .	13
<b>2</b>	<b>Guidelines</b>	<b>14</b>
2.1	Creating a Project . . . . .	14
2.1.1	. . . . .	14
2.2	Managing Resources . . . . .	14
2.2.1	Description . . . . .	14
2.3	Creating ODT Report Templates . . . . .	15
2.3.1	. . . . .	15
2.3.1.1	Description . . . . .	15
2.3.1.2	User Field Variables . . . . .	15
2.3.1.2.1	Variables . . . . .	15
2.3.1.2.1.1	Single Data Field . . . . .	15

## The Plan Handbook

2.3.1.2.1.2	Table Data	15
2.3.1.2.1.3	Chart Data	16
2.3.1.2.2	Translated Labels	16
2.3.1.2.3	Project Values	16
2.3.1.2.4	Schedule Values	17
2.3.1.2.5	Tables	17
2.3.1.3	Chart	20
2.3.1.3.1	Gantt	20
<b>3</b>	<b>Views and Editors</b>	<b>21</b>
3.1	Startup View	21
3.1.1		21
3.2	Task Editor	21
3.2.1		21
3.2.1.1	Description	21
3.2.1.2	Toolbar	22
3.2.1.3	Editing data	23
3.2.1.4	Task Modules Docker	24
3.2.1.5	Resources Docker	24
3.2.1.6	Allocations Docker	24
3.2.1.7	Configuration	24
3.3	Resource Editor	25
3.3.1		25
3.3.1.1	Description	25
3.3.1.2	Toolbar	25
3.3.1.3	Editing data	26
3.3.1.4	Configuration	26
3.4	Work and Vacation Editor	27
3.4.1		27
3.4.1.1	Description	27
3.4.1.2	Editing data	28
3.5	Cost Breakdown Structure Editor	28
3.5.1		28
3.5.1.1	Description	28
3.5.1.2	Toolbar	29
3.5.1.3	Editing data	29
3.6	Task Dependency Editor (Graphical)	29
3.6.1		29
3.6.1.1	Description	29
3.6.1.2	Editing dependencies	30
3.6.1.3	Toolbar	30
3.7	Task Dependency Editor (List)	31
3.7.1		31

## The Plan Handbook

3.8	Schedules Editor	31
3.8.1		31
3.8.1.1	Description	31
3.8.1.2	Toolbar	32
3.8.1.3	Editing data	33
3.8.1.4	Configuration	34
3.9	Project Performance View	35
3.9.1	Description	35
3.10	Task Performance View	35
3.10.1		35
3.11	Task Status View	36
3.11.1		36
3.11.1.1	Description	36
3.11.1.2	Editing data	37
3.11.1.3	Configuration	37
3.12	Task Execution View	38
3.12.1		38
3.12.1.1	Description	38
3.12.1.2	Data	38
3.12.1.3	Configuration	39
3.13	Task Gantt View	39
3.13.1		39
3.13.1.1	Description	39
3.13.1.2	Editing data	39
3.13.1.3	Configuration	40
3.14	Milestone Gantt View	40
3.14.1		40
3.14.1.1	Description	40
3.14.1.2	Editing data	40
3.14.1.3	Configuration	40
3.15	Resource Assignment Gantt View	41
3.15.1		41
3.15.1.1	Description	41
3.15.1.2	Data	41
3.15.1.3	Editing data	41
3.15.1.4	Configuration	41
3.16	Resource Assignment View	41
3.16.1		41
3.16.1.1	Description	41
3.16.1.2	Data	42
3.16.1.3	Editing data	42
3.16.1.4	Configuration	42

## The Plan Handbook

<b>4 Reports</b>	<b>43</b>
4.1 Reports Generator View . . . . .	43
4.1.1 . . . . .	43
4.1.1.1 Description . . . . .	43
4.1.1.2 Toolbar . . . . .	43
<b>5 Credits and License</b>	<b>45</b>

## Abstract

# Chapter 1

## Introduction to Plan

### 1.1 Introduction

#### 1.1.1

Features include:

- Task management using the [Task Editor](#)
  - Work breakdown structure with configurable WBS codes
  - Tasks, summary tasks, and milestones
  - Different types of time constraints
  - Different types of dependencies.
- Resource management using the [Resource Editor](#)
  - Resource breakdown structure
  - Working- and material resource types
  - Resource allocation on group level
  - Resource teams
- Work time & vacation definition using the [Work and Vacation Editor](#)
- Cost management using the [Cost Breakdown Structure Editor](#)
- Earned value management
- Project scheduling using the [Schedules Editor](#)
  - Schedule forward from start time or backward from finish time
  - Allow or avoid resource overbooking
  - PERT distribution with optimistic-, pessimistic-, and most likely estimates
  - Multiple schedules with a possibility to schedule from current progress information
- Task tracking using the [Task Execution View](#) or [Task Status View](#)



## 1.2 Definitions

### 1.2.1

#### 1.2.1.1 Introduction

In project management, terms may be used in different ways in different programs or different companies or project types. Looking at more exhaustive project management glossaries, one will find alternative definitions for most terms.

This list defines how certain terms are used in **Plan**.

#### 1.2.1.2 Terms

##### **Account**

An account is used in a *Cost Breakdown Structure (CBS)* to represent a place where cost from [tasks](#) or [resources](#) can be aggregated.

##### **ACWP**

[Actual Cost of Work Performed](#)

##### **Actual Cost of Work Performed**

The actual cost (or effort) that has been performed.

##### **Allocation**

Tasks are allocated to [Resources](#) during the planning stage of the project. The actual assignment is done during scheduling. Note that assignment is not guaranteed as the resource may not be available.

##### **Assignment**

Tasks are assigned to [Resources](#) during scheduling.

##### **BCWS**

[Budgeted Cost of Work Scheduled](#)

##### **Budgeted Cost of Work Scheduled**

The cost (or effort) that should have been used in order to reach the stated progress.

##### **BCWP**

[Budgeted Cost of Work Performed](#)

##### **Budgeted Cost of Work Performed**

The cost (or effort) that has been performed.

##### **CBS**

[Cost Breakdown Structure](#)

##### **CPI**

Is the *Cost Performance Index* and is equal to  $BCWP/ACWP$ . When this index is below 1, means that you are over budget. If the index is greater than 1 means that the costs are under budget.

##### **Cost Breakdown structure**

The CBS organizes [accounts](#) into a structure to enable cost to be aggregated independent of the [WBS](#) and [RBS](#).

**Estimate**

The estimate is the expected amount of effort or time needed to complete a [task](#).

**Milestone**

A milestone is a [task](#) with an effort of 0.00h. It is typically used to mark a major outcome, for example the completion of a deliverable upon customer acceptance.

**PERT**

[Program Evaluation and Review Technique](#)

**Program Evaluation and Review Technique**

The Program Evaluation and Review Technique is an enhancement to the Critical Path Method. [Task](#) effort estimates in CPM are point estimates, while [task](#) effort estimates in PERT are computed by weighting the Optimistic, Most Likely, and Pessimistic estimates  $(O+(4*M)+P)/6$ .

**PERT Distribution**

A simplified way to calculate Expected estimate from Optimistic-, Most Likely- and Pessimistic estimate.

**RBS**

[Resource Breakdown Structure](#)

**Resource Breakdown Structure**

The RBS organizes resources into [resource groups](#).

**Resource**

A resource can be of type *Work*, *Material* or *Team*. A resource must always belong to a [Resource Group](#).

**Resource Group**

A resource group is used to group similar [resources](#).

**Resource Team**

A [resource](#) team is a resource that consists of a number of other resources.

**SPI**

Is the Schedule Performance Index and is equal to  $BCWP/BCWS$ . When this index is below 1, means that you are behind schedule. If the index is greater than 1 means that you are ahead of the schedule.

**Summary Task**

A Summary Task has subordinate Sub-Tasks, and rolls up information based on the Sub-Tasks.

**Task**

A Task is a unit of work. [Resources](#) are generally allocated at the Task level.

**vCard**

vCard is a file format standard for electronic business cards.

**WBS**

[Work Breakdown Structure](#)

**Work Breakdown Structure**

The WBS is used to break down large projects into manageable chunks to ease planning and management.

## 1.3 Context Help

### 1.3.1

Many functions and views have help and hints that can be displayed with the *What's This* function.

You can activate it with the menu entry **Help** → **WhatsThis** or keyboard shortcut **Shift-F1**.

In dialogs it is activated by pressing the ? in the dialogs title bar.

## 1.4 Main Work Space

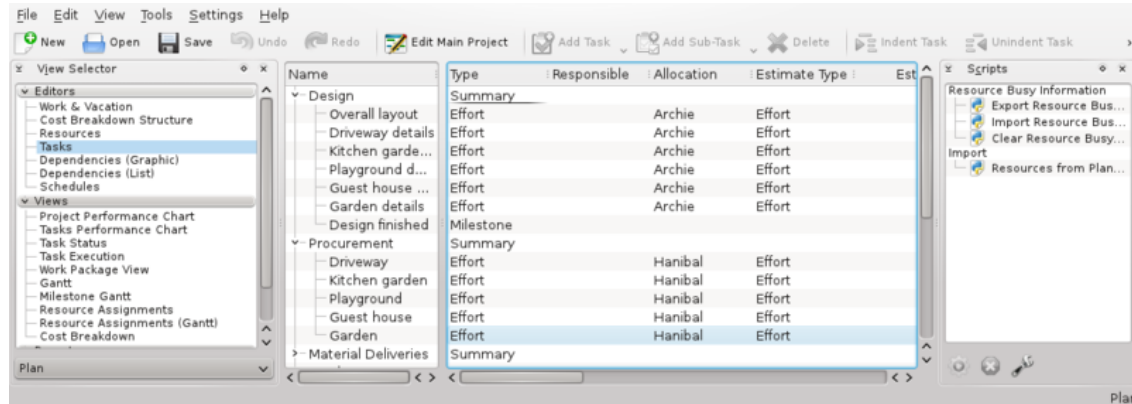
### 1.4.1

#### 1.4.1.1 Description

The Main Work Space is normally organized with the View Selector to the left and the data view to the right.

As usual, you will also find the Menu bar and Toolbar at the top, and the Status bar at the bottom.

Since both the View selector and the Scripts docker are dockers they can be moved to the different border, floated or hidden. To show a hidden docker, use the **Settings** → **Dockers** menu entry.



#### 1.4.1.2 The View Selector

The [View Selector](#) enables you to select the data view you want to display from the currently listed views.

Views are grouped into categories for easier retrieval: Editors, Views, Execution and Reports by default:

- Editors holds the editors that you need to define and schedule your project.
- Views holds views that are used for inspecting your project.
- Execution holds views that are especially useful during the execution of your project.
- Reports holds views for report generation.

Views can also be moved within or across categories, or added to or removed from the [View Selector](#).

### 1.4.1.3 Schedule Selector

The Schedule Selector enables you to select the schedule all the views (e.g. [Gantt View](#)) shall display values from. Tasks which has not been scheduled in the selected schedule are not normally shown in any of the views. (They are shown in editors, of course.)

### 1.4.1.4 Status Bar

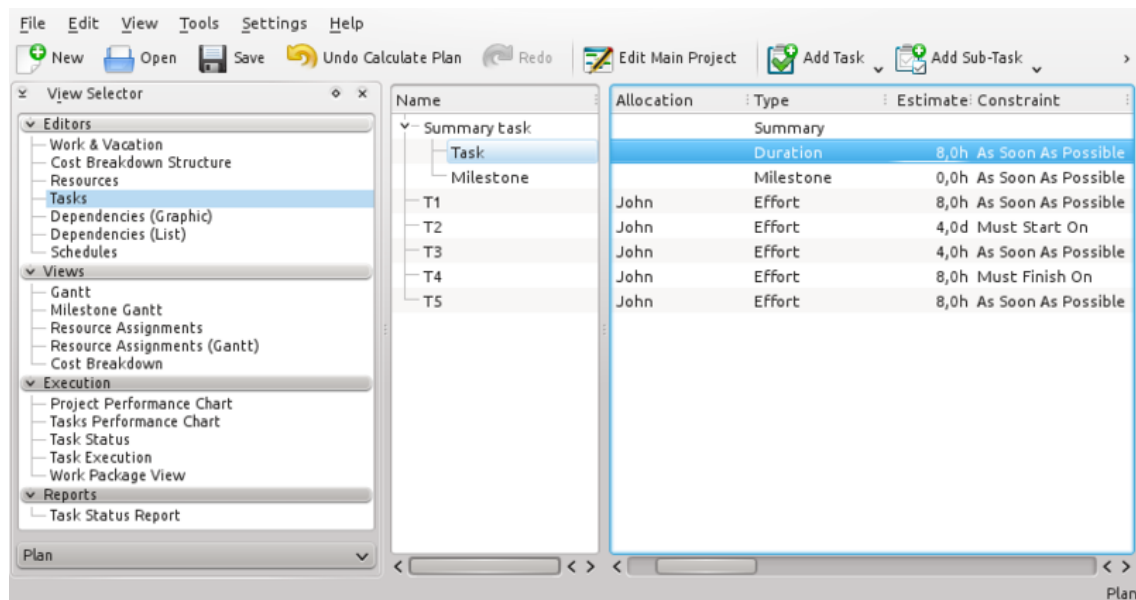
The status bar shows messages and progress information. Most notably is the currently selected schedule shown at the right of the status bar. Note that most of the views in the *Views* category display information depending on the selected schedule, so if the project is not scheduled (*Not Scheduled*), most views will be empty.

## 1.5 Using the Views

### 1.5.1

#### 1.5.1.1 Description

The Task Editor is a view that displays task data in a tree structure. Most data in the Task Editor can be edited in situ.



#### 1.5.1.2 Navigation

You can navigate the tree structure using the keyboard:

+	Expand an expandable row.
-	Collapse a collapsible item.
Arrow left	Go to previous column in the same row.
Arrow right	Go to next column in the same row.
Arrow up	Go to previous row in the same column.

## The Plan Handbook

<b>Arrow down</b>	Go to next row in the same column.
<b>Home</b>	Go to first row, first column.
<b>End</b>	Go to last row, last column.
<b>Page up</b>	Go to first visible row in the same column.
<b>Page down</b>	Go to last visible row in the same column.

### 1.5.1.3 Editing data

Editable items are opened for editing by double-clicking on the item or, if using the keyboard, pressing F2 will open the current item.

When editing an item you can navigate to the next editable item as follows:

<b>Ctrl-Alt-Arrow left</b>	Go to the previous editable item in the same row.
<b>Ctrl-Alt-Arrow right</b>	Go to the next editable item in the same row.
<b>Ctrl-Alt-Arrow up</b>	Go to the next editable item in preceding rows.
<b>Ctrl-Alt-Arrow down</b>	Go to the next editable item in succeeding rows.

### 1.5.1.4 Drag & drop and copy/paste

Most views support drag & drop and copy/paste. Charts and Gantt charts can be dragged to applications that support images. Table data uses the html mime type, so can be dropped on any applications that supports this. If the view supports moving or copying items internally e.g. the [Task Editor](#), items can also be moved or copied.

# Chapter 2

## Guidelines

### 2.1 Creating a Project

#### 2.1.1

A new project can be created by pressing the *New Project* button or selecting a *project template* in the *Startup View*.

This will create a new project with default values defined in [Settings](#) or from values defined in the template. The Project Settings Dialog will open to enable you to define project specific properties like *project name*, *manager* and *target times*.

When you create your first project, consider creating resources in a separate file. When you refer to this file in your project(s), you do not need to define your resources again, and you can coordinate resource usage across projects.

See [Managing Resources](#).

If you want to coordinate resource usage across projects, your project files must be stored in the same directory.

A useful structure could be something like this:

```
Plan
!-- Resources
!     !-- SharedResources.plan
!-- Taskmodules
!     !-- Task modules (if any)
!-- Templates
!     !-- Project templates (if any)
!-- Projects
!     !-- <project 1>.plan
!     !-- <project 2>.plan
!     !-- etc
```

### 2.2 Managing Resources

#### 2.2.1 Description

You can create resources for a project using the [Resource Editor](#) and [Work and Vacation Editor](#).

However, if you are going to use the same resources in many projects (which is often the case) it is more convenient to maintain resources in a separate file. The best way to do this is to create your resources file first and then set up Plan to always load this file when creating a new project.

If you are managing projects that use totally different resource pools you can create multiple resource files, but one project can only refer to one resource file.

You can select the resource file to use when creating a new project.

## 2.3 Creating ODT Report Templates

### 2.3.1

#### 2.3.1.1 Description

Open Document Text report templates are regular ODT files that can be designed using any ODT word processor like *Calligra Words* or *LibreOffice Writer*. The technique used is to use *user field* variables to hold references to the information that shall be fetched from the project. The variables are called *User Fields* in *Writer* and can be found under **Insert** → **Field** → **More Fields** → **Variables** → **User Fields**. In *Words* they are called *Custom Variables* and can be found under **Text Editing docker** → **Variable** → **Custom**.

The easiest way to create a new report template is to modify an existing one as all user fields are defined.

#### 2.3.1.2 User Field Variables

##### 2.3.1.2.1 Variables

The variables are used to enable the generator to extract data from the project.

A variable can be a reference to a single data field, a reference to table data or a reference to chart data.

##### 2.3.1.2.1.1 Single Data Field

A single data field variable has the following format:

*data group name.property = property identifier*

where:

- *data group name* can be *tr*, *project* or *schedule* (see below).
- *property* makes the user field name unique.
- *property identity* identifies the property in the data group.

##### 2.3.1.2.1.2 Table Data

A table in a report template consists of a variable to specify the data table to use.

The variable name must start with *table* (e.g. *tableTasks*) and the variable value must be the name of the data table (e.g. *tasks*).

Immediately after the variable, a table must be inserted and columns filled with user field variables that specify which properties to fetch from the table specified above. These variables must have names that start with the name of the table variable above.

## The Plan Handbook

These variables have the following format:

`tableTasks.property = property identifier`

where:

- **property** makes the user field name unique.
- **property identifier** identifies the property in the data group.

### 2.3.1.2.1.3 Chart Data

A chart in a report template consists of a variable to specify the data to use in the chart.

The variable name must start with *chart* (e.g. `chartBudgetCost`) and the variable value specifies the data group and values to populate the chart.

The variable has the following format (note the semicolons):

`name = data group; values=comma separated list of data properties;`

where:

- *name* must start with **chart** (e.g. `chartBudgetCost`)
- *data group*
- **comma separated list of data properties** identifies the properties in the data group.

E.g.:

`chartBudget = project; values=bcws cost, bcwp cost, acwp cost;`

### 2.3.1.2.2 Translated Labels

Translated labels enable us to produce general report templates that can be used in different languages.

Variable Name	Variable Value
<code>tr.project</code>	Project
<code>tr.manager</code>	Manager
<code>tr.schedule</code>	Schedule
<code>tr.bcws</code>	BCWS
<code>tr.bcwp</code>	BCWP
<code>tr.acwp</code>	ACWP
<code>tr.spi</code>	SPI
<code>tr.cpi</code>	CPI

### 2.3.1.2.3 Project Values

Shows values from the main project.

Variable Name	Variable Value	Description
<code>project.name</code>	Name	The name of the project



## The Plan Handbook

project.manager	Manager	The name of the project manager
project.bcws cost	BCWS Cost	Cost based Budgeted Cost of Work Scheduled
project.bcwp cost	BCWP Cost	Cost based Budgeted Cost of Work Performed
project.acwp cost	ACWP Cost	Cost based Actual Cost of Work Performed
project.spicost	SPI Cost	Cost based Schedule Performance Index
project.cpicost	CPI Cost	Cost based Cost Performance Index
project.bcws effort	BCWS Effort	Effort based Budgeted Cost of Work Scheduled
project.bcwp effort	BCWP Effort	Effort based Budgeted Cost of Work Performed
project.acwp effort	ACWP Effort	Effort based Actual Cost of Work Performed
project.spieffort	SPI Effort	Effort based Schedule Performance Index
project.cpieffort	CPI Effort	Effort based Cost Performance Index

### 2.3.1.2.4 Schedule Values

Shows values from the current schedule.

Variable Name	Variable Value	Description
schedule.name	Name	The name of the schedule
schedule.state	State	Scheduling state
schedule.direction	Name	Scheduling direction
schedule.overbooking	Overbooking	Overbooking
schedule.distribution	Distribution	Distribution
schedule.plannedstart	Planned Start	Planned Start
schedule.plannedfinish	Planned Finish	Planned Finish
schedule.scheduler	Scheduler	Scheduler
schedulegranularity	Granularity	Granularity
schedule.mode	Mode	Scheduling mode (Auto or Manual)

### 2.3.1.2.5 Tables

Supported table types:

- tasks
- taskstatus
- schedules
- projects

## The Plan Handbook

To create a table, place a variable just before a table in your template file. The variable name identifies the table and must start with **table**, e.g. **tableTaskStatus**.

The value of the variable is used to point to the data to be fetched and must be one of the supported tables listed above, e.g. **taskstatus**.

You then put variables inside the table cells with name and value from the table below.

Note that the schedules table supports the values described in [Schedule Values](#) above.

The projects, tasks and taskstatus tables supports the following values:

Variable Name	Variable Value	Description
<i>table name.name</i>	Name	The name of the task or project
<i>table name.wbscode</i>	WBS Code	
<i>table name.type</i>	Type	Type of task
<i>table name.responsible</i>	Responsible	
<i>table name.allocation</i>	Allocation	
<i>table name.estimate</i>	Estimate Type	
<i>table name.calendar</i>	Calendar	
<i>table name.estimate</i>	Estimate	Most likely estimate
<i>table name.optimistic</i>	Optimistic	Optimistic ratio
<i>table name.pessimistic</i>	Pessimistic	Pessimistic ratio
<i>table name.risk</i>	Risk	Estimate uncertainty
<i>table name.constraint</i>	Constraint	Type of time constraint
<i>table name.constraintstart</i>	Constraint Start	Constraint start time
<i>table name.constraintend</i>	Constraint End	Constraint finish time
<i>table name.runingaccount</i>	Running Account	Account for running costs
<i>table name.startupaccount</i>	Startup Account	Account for startup cost
<i>table name.startupcost</i>	Startup Cost	The cost incurred at startup of the task
<i>table name.shutdownaccount</i>	Shutdown Account	Account for shutdown cost
<i>table name.shutdowncost</i>	Shutdown Cost	The cost incurred at shutdown of the task
<i>table name.description</i>	Description	Task description
<i>table name.expected</i>	Expected	Calculated most likely estimate
<i>table name.optimistic</i>	Optimistic	Calculated optimistic estimate
<i>table name.pessimistic</i>	Pessimistic	Calculated pessimistic estimate
<i>table name.starttime</i>	Start Time	Scheduled start time
<i>table name.endtime</i>	End Time	Scheduled finish time
<i>table name.duration</i>	Duration	Scheduled duration
<i>table name.earlystart</i>	Early Start	Earliest possible start
<i>table name.earlyfinish</i>	Early Finish	Earliest possible finish
<i>table name.lateststart</i>	Late Start	Latest possible start
<i>table name.latestfinish</i>	Late Finish	Latest possible finish

## The Plan Handbook

<i>table name</i> .positivefloat	Positive Float	
<i>table name</i> .freefloat	Free Float	
<i>table name</i> .negativefloat	Negative Float	
<i>table name</i> .startfloat	Start Float	
<i>table name</i> .finishfloat	Finish Float	
<i>table name</i> .assignments	Assignments	Resource assignments
<i>table name</i> .varianceest	Variance (Est)	Calculated estimate variance
<i>table name</i> .variancedur	Variance (Dur)	Calculated duration variance
<i>table name</i> .optimisticdur	Optimistic (Dur)	Calculated optimistic duration
<i>table name</i> .pessimisticdur	Pessimistic (Dur)	Calculated pessimistic duration
<i>table name</i> .status	Status	Task status as shown in Task Status View
<i>table name</i> .completion	% Completed	Task completion
<i>table name</i> .plannedeffort	Planned Effort	Planned effort
<i>table name</i> .actualeffort	Actual Effort	Actual effort
<i>table name</i> .remaningeffort	Remaining Effort	Remaining effort
<i>table name</i> .plannedcost	Planned Cost	Planned cost
<i>table name</i> .actualcost	Actual Cost	Actual cost
<i>table name</i> .actualstart	Actual Start	Actual start
<i>table name</i> .started	Started	
<i>table name</i> .actualfinish	Actual Finish	Actual finish
<i>table name</i> .finished	Finished	
<i>table name</i> .schedulingstatus	Scheduling Status	Scheduling status
<i>table name</i> .bcws	BCWS	Budgeted Cost of Work Scheduled (cost based)
<i>table name</i> .bcwp	BCWP	Budgeted Cost of Work Performed (cost based)
<i>table name</i> .acwp	ACWP	Actual Cost of Work Performed (cost based)
<i>table name</i> .spi	SPI	Schedule Performance Index
<i>table name</i> .critical	Critical	Task is critical
<i>table name</i> .criticalpath	Critical Path	Task is in critical path
<i>table name</i> .notscheduled	Not Scheduled	Not interesting
<i>table name</i> .assignmentmissing	Assignment Missing	Not interesting
<i>table name</i> .resourceoverbooked	Resource Overbooked	Not interesting
<i>table name</i> .resourceunavailable	Resource Unavailable	Not interesting
<i>table name</i> .constrainterror	Constraints Error	Not interesting
<i>table name</i> .effortnotmet	Effort Not Met	Not interesting

## The Plan Handbook

<i>table name</i> .schedulingerror	Scheduling Error	Not interesting
<i>table name</i> .level	Node level, Level	Not interesting
<i>table name</i> .statusnote	Status Note	Note: Not implemented
<i>table name</i> .owner	Owner	Must not be used, and are not very interesting
<i>table name</i> .status	Status	Must not be used, and are not very interesting
<i>table name</i> .time	Time	Must not be used, and are not very interesting

### 2.3.1.3 Chart

Use by placing a variable with name chartX (X=some text to make the variable name unique) with a value project before the chart that shall be used.

The variable has this format:

Variable: Name: chartX (X=some text) Value: project; values=data;

where *data* is a comma separated list of values to be include in the chart.

Possible *data* values are:

- **bcws effort** Budgeted cost of work scheduled, effort based.
- **bcwp effort** Budgeted cost of work performed, effort based.
- **acwp effort** Actual cost of work performed, effort based.
- **spi effort** Schedule performance index, effort based.
- **cpi effort** Cost performance index, effort based.
- **bcws cost** Budgeted cost of work scheduled, cost based.
- **bcwp cost** Budgeted cost of work performed, cost based.
- **acwp cost** Actual cost of work performed, cost based.
- **spi cost** Schedule performance index, cost based.
- **cpi cost** Cost performance index, cost based.

The charts you create in your template must have the same (or more) number of columns as the number of values you specify in your variable.

Example:

Variable name: chart1 Value: project; values=bcws cost,bcwp cost, acwp cost;

Note that you cannot mix effort- and cost-based values. If you want to show both, create two charts.

#### 2.3.1.3.1 Gantt

Not supported.

## Chapter 3

# Views and Editors

### 3.1 Startup View

#### 3.1.1

The Startup View is shown at startup and when **File** → **New** is selected.

It has 3 sections for:

- Creation of new projects. See also [Creating a Project](#) and [Managing Resources](#)
- Opening existing projects. This section gives you the possibility to open an existing project file or one of the 10 most recent projects you have opened.
- The Help section gives you links to introductory pages, documentation and community forum.

### 3.2 Task Editor

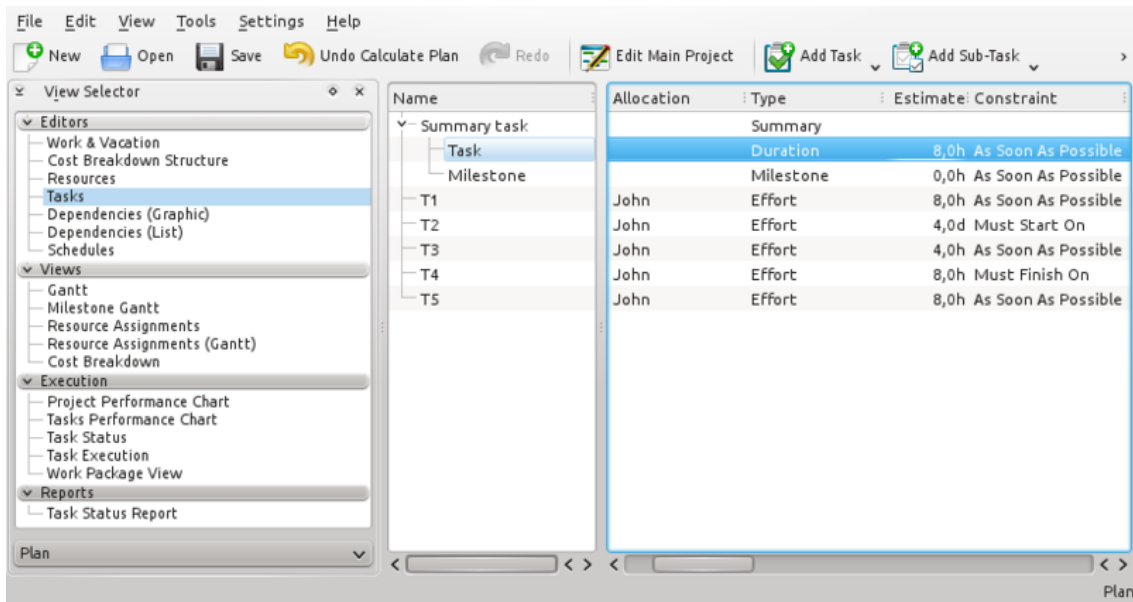
#### 3.2.1

##### 3.2.1.1 Description

The Task Editor is used to create, edit, and delete tasks.

Tasks can be organized into a hierarchical tree structure to any depth.

## The Plan Handbook



### 3.2.1.2 Toolbar

The toolbar provides the means to create, delete and move tasks and milestones:

Button	Shortcut	Description
Add Task	<b>Ctrl-I</b>	Dropdown box to create a task or milestone. The new item is positioned after the currently selected item on the same level as the selected item. If no item is selected, the new item is appended at the top level.
	<b>Ctrl-Alt-I</b>	
Add Sub-task	<b>Ctrl-Shift-I</b>	Dropdown box to create a sub-task or -milestone. The new item is appended as a child to the currently selected item.
	<b>Ctrl-Shift-Alt-I</b>	
Delete Task	<b>Delete</b>	Deletes the selected tasks.
Indent Task		Appends the selected task as a child to the task above.
Unindent Task		Moves the selected task one level up, inserting it after its current parent task.
Move Up		Moves the selected task up one place.
Move Down		Moves the selected task down one place.

Note that you can also move or copy tasks using drag and drop or copy/paste.

### 3.2.1.3 Editing data

Data can be edited inline as described [here](#) or by using the Task Settings Dialog.

The following columns are displayed as default:

Column	Description
Name	The name of the task.
Status	Task status
Responsible	The person responsible for this task.
Allocation	List of resource allocations.
Type	The type of task or the estimate type of the task. The type can be set to <i>Milestone</i> , <i>Effort</i> or <i>Duration</i> . <b>Note:</b> If the type is <i>Summary</i> or <i>Project</i> the type is not editable.
Calendar	The calendar used when estimate type is <i>Duration</i> .
Estimate	The most likely estimate. The estimate is the expected amount of effort or time needed to complete a task. It can be expressed in different units: h (hours), d (days), w (weeks) and M (months).
Optimistic Ratio	Optimistic estimate expressed as a negative percentage of the most likely estimate. (E.g. -20%). This is only used if a PERT distribution is used.
Pessimistic Ratio	Pessimistic estimate expressed as a positive percentage of the most likely estimate. (E.g. 50%). This is only used if a PERT distribution is used.
Risk	Risk controls the PERT distribution used when calculating the actual estimate for this task.
Constraint	The timing constraint type.
Constraint Start	Constraint start time.
Constraint End	Constraint end time.
Running Account	Account for running costs.
Startup Account	Account for cost incurred at startup of the task.
Startup Cost	The cost incurred at startup of the task.
Shutdown Account	Account for cost incurred at shutdown of the task.
Shutdown Cost	The cost incurred at shutdown of the task.
Description	Task notes.

### 3.2.1.4 Task Modules Docker

Task Modules are groups of tasks that can be reused across projects.

This makes it possible to draw on past experience and to standardize similar operations.

A task module is inserted into your project by dragging it from the docker and dropping it into your project.

A task module is a regular plan file, and is designed using **Plan** in the same way as designing a regular project.

A task module, however, typically includes only tasks, estimates, and dependencies.

The project name is displayed in the docker, and the description is used as the tooltip.

A module can be opened for inspection or editing by double-clicking on the module.

The modules can be grouped by storing them in different directories. Where to search for them is configured using the Project Settings Dialog.

Default values for new projects can be defined using the Plan Configuration Dialog.

### 3.2.1.5 Resources Docker

The Resources Docker offers a simple way to allocate resources to tasks by selecting the resources you need and dragging them onto the *Allocation* column.

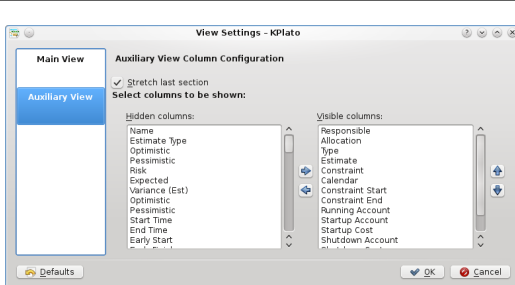
A resource can also be dropped on the *Responsible* column.

### 3.2.1.6 Allocations Docker

The Allocations Docker displays the current resource allocation for the selected task.

### 3.2.1.7 Configuration

Using the context menu, the view can be configured to show / hide the Project, split / unsplit the tree view or it can be configured using the configure dialog.

<p>The configure dialog enables you to tailor the amount of information the view displays to fit your needs.</p>	
--	--

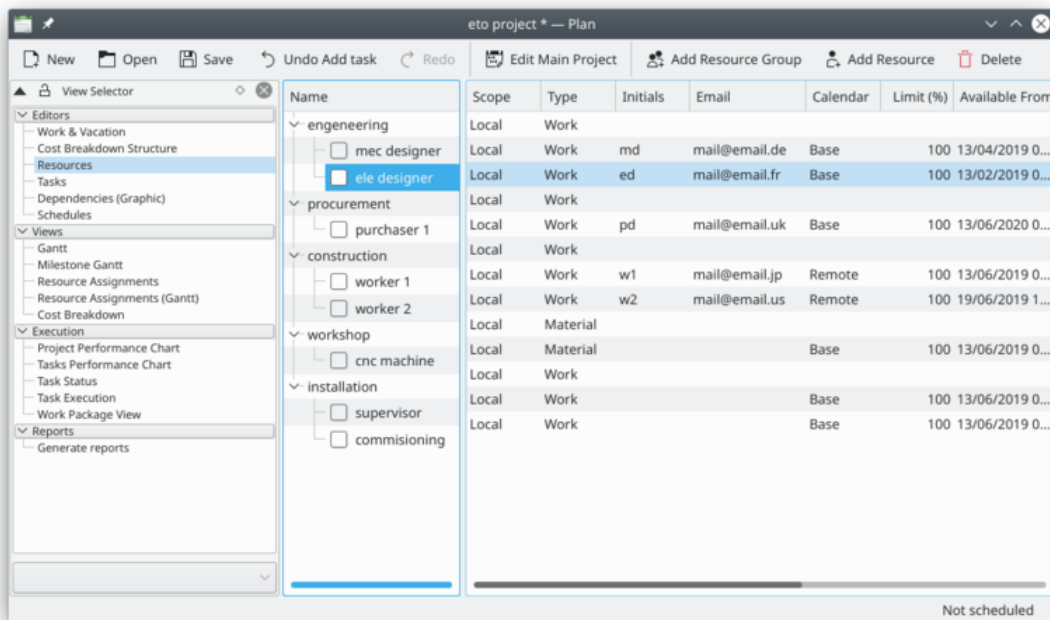


## 3.3 Resource Editor

### 3.3.1

#### 3.3.1.1 Description

The Resource Editor is used to create, edit, and delete resources and resource groups. Resources must belong to a resource group. At the moment sub-groups are not allowed.



Working resources must refer to a *calendar* that defines the working hours for the resource. Calendars are created using the [Work and Vacation Editor](#).

Material resources are by default always available. You can use a calendar to limit its availability.

Resources can be *Shared* or *Local*. A local resource is only used in the current project. A shared resource can be shared between multiple projects and is stored in a separate file, see [Managing Resources](#).

#### 3.3.1.2 Toolbar

The toolbar provides the means to create and delete resources and resource groups:

Button	Shortcut	Description
Add Resource Group	<b>Ctrl-I</b>	Button to create a resource group. The new group is appended at the end of the groups.
Add Resource	<b>Ctrl-Shift-I</b>	Button to create a resource. The new resource is appended as a child to the currently selected group. If a resource is selected, the new resource is appended to its parent group.

## The Plan Handbook

Delete	<b>Delete</b>	Deletes the selected resources and/or resource groups.
--------	---------------	--

Resources can be created by dropping data from any application that supports dragging vCard information, like *KAddressBook* or *Evolution*.

Resources can be copied or moved to a different resource group using drag-and-drop.

<b>NOTE</b> When moving a resource, the resource will lose any allocations.
--

### 3.3.1.3 Editing data

Data can be edited inline as described [here](#).

Resources can also be edited using the Resource Settings Dialog.

The following columns are displayed as default:

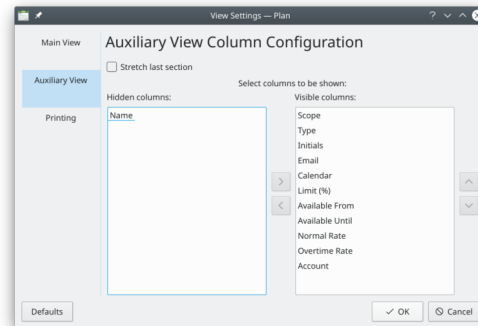
Column	Description
Name	The name of the resource or resource group.
Scope	A resource can be <i>Shared</i> or <i>Local</i> . A shared resource cannot be edited.
Type	The type of resource or resource group.
Initials	The initials of the resource.
Email	The e-mail address of the resource.
Calendar	The calendar defines when the resource is working.
Limit (%)	The maximum load that can be assigned.
Available From	Defines when the resource is available to the project.
Available Until	Defines when the resource is available to the project.
Normal Rate	The cost per hour, normal hours.
Account	The account where the resource cost is accumulated.

### 3.3.1.4 Configuration

---

Using the context menu, the view can be configured to split/unsplit the tree view or it can be configured using the configure dialog.

The configure dialog enables you to tailor the amount of information the view displays to fit your needs.



## 3.4 Work and Vacation Editor

### 3.4.1

#### 3.4.1.1 Description

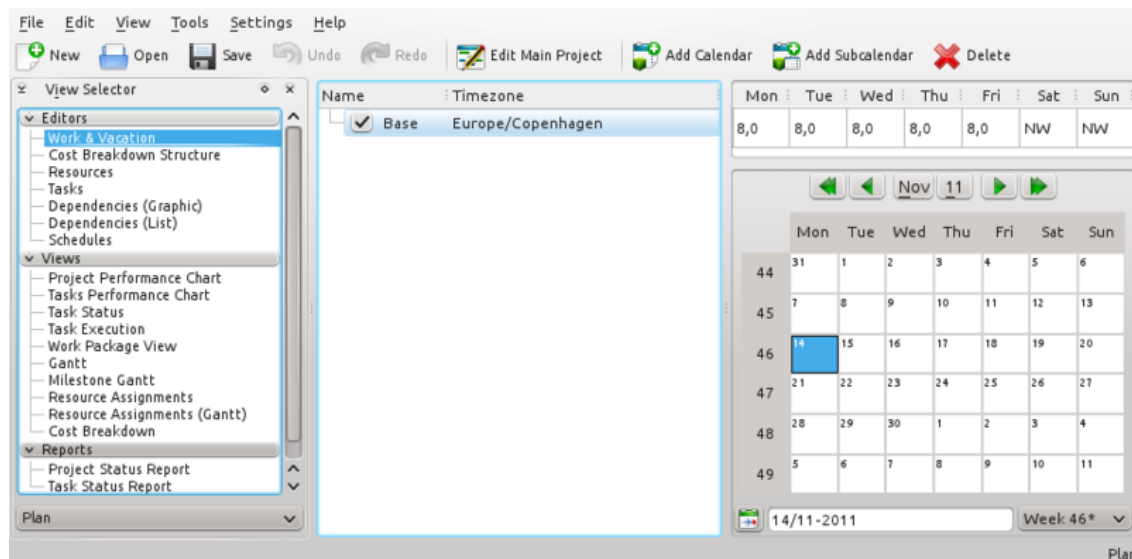
The Work and Vacation Editor is used to create, edit, and delete calendars.

Calendars define the working hours for resources. Calendars can also be used by tasks with estimate type *Duration*.

Calendars have a time zone specification so you can define working hours in the resources local time.

A calendar consists of definitions for weekdays and dates. If the date has a definition, this definition is used. If the state of the date is *Undefined*, the definition for the weekday is used. If this is also *Undefined*, the parent calendar is checked.

A calendar can be defined as *Default* and is then used by all working resources without a calendar reference.



The toolbar provides the means to create and delete calendars:

Button	Shortcut	Description
Add Calendar	<b>Ctrl-I</b>	Button to create a calendar. The new calendar is appended on the same level as the selected calendar.
Add Subcalendar	<b>Ctrl-Shift-I</b>	Button to create child calendar. The new calendar is appended as a child to the currently selected calendar.
Delete Selected Calendar	<b>Delete</b>	Deletes the selected calendar.

### 3.4.1.2 Editing data

Calendar name and time zone can be edited inline as described [here](#).

The state of days and weekdays are edited by selecting the day or days you want to edit and open the context menu.

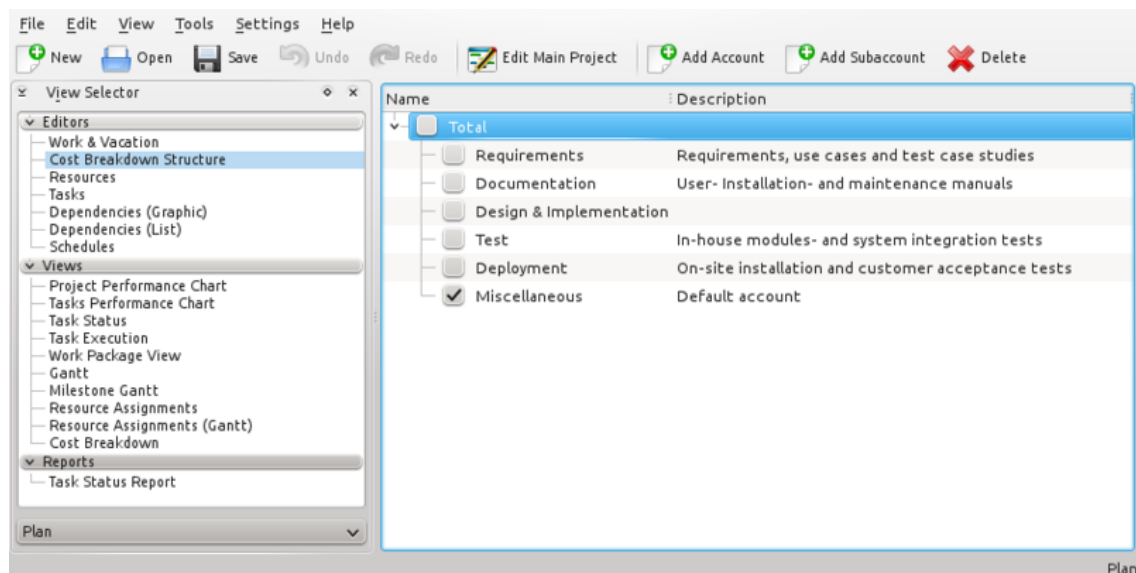
Selecting *Work...* opens the Edit Work Intervals Dialog.

## 3.5 Cost Breakdown Structure Editor

### 3.5.1

#### 3.5.1.1 Description

The Cost Breakdown Structure Editor is used to create, edit, and delete accounts.



Accounts can be connected to by tasks and resources to accumulate costs from those tasks and resources.

The default account accumulates costs incurred from tasks that are not connected to an account.

### 3.5.1.2 Toolbar

The toolbar provides the means to create and delete accounts:

Button	Shortcut	Description
Add Account	Ctrl-I	Button to create an account. The new account is inserted after the selected account. If no account is selected, the new account is appended at the top level.
Add Subaccount	Ctrl-Shift-I	Button to create a sub-account. The new account is appended as a child to selected account.
Delete	Delete	Deletes the selected account.

### 3.5.1.3 Editing data

Data can be edited inline as described [here](#).

The following columns are available:

Column	Description
Name	The name of the account.
Description	The description of the account.

## 3.6 Task Dependency Editor (Graphical)

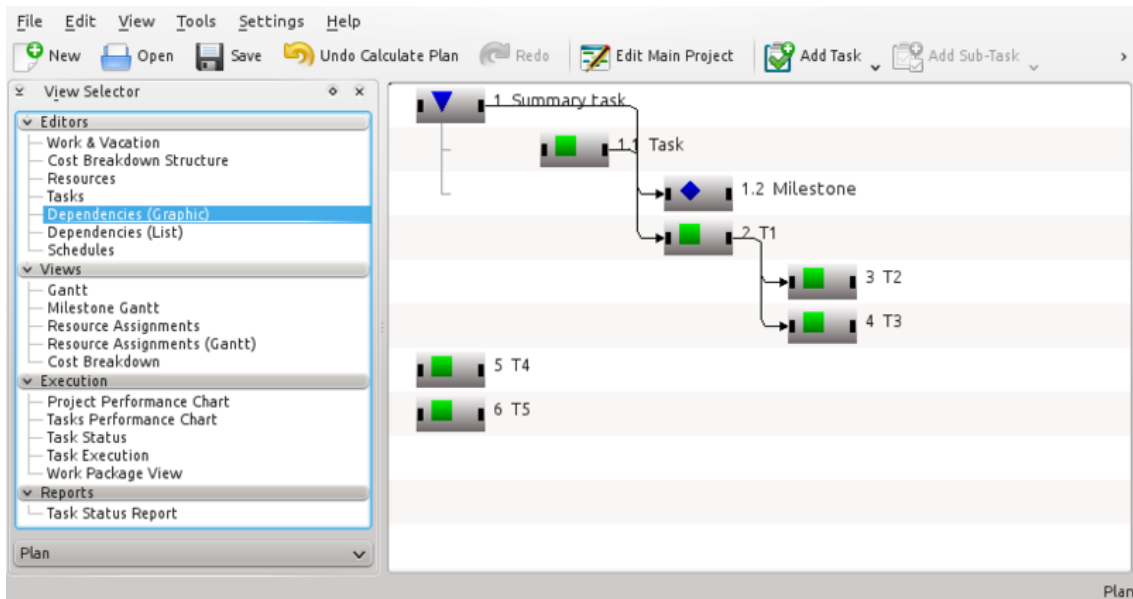
### 3.6.1

#### 3.6.1.1 Description

The Task Dependency Editor is used to create, edit, and delete task dependencies. For convenience, tasks can also be inserted, deleted or edited.

The tasks are ordered in accordance with the Work Breakdown Structure (WBS).

## The Plan Handbook



The symbols for summary tasks, tasks and milestones are shown below:

As the *Task* and *Milestone* are sub-items to the *Summary task*, they are indented. Also, note that the WBS code is displayed along with the name.

In the following figure, a *Finish-Start* dependency has been inserted to make *Milestone* depend on *Task*.

As shown below, an item consists of three different selection areas:

Item area	Select the item for editing
Start area	Used for creating <i>Finish-Start</i> and <i>Start-Start</i> dependencies
Finish area	Used for creating <i>Finish-Start</i> and <i>Finish-Finish</i> dependencies

### 3.6.1.2 Editing dependencies

Dependencies are created by first selecting a start- or finish area of the predecessor task, then selecting the start- or finish area of the successor task.

This can be done using the mouse or the keyboard.

Alternatively, you can drop the predecessor's connection area on the successor's connection area.

To edit or delete an existing dependency, you can open a dependency by selecting it, or open its context menu.

You can also open the context menu on a connection area which will enable you to edit all dependencies connected to that area.

### 3.6.1.3 Toolbar

The toolbar provides the means to create and delete tasks:

Button	Shortcut	Description
Add Task	Ctrl-I	Dropdown box to create a task or milestone. The new item is positioned after the currently selected item on the same level as the selected item. If no item is selected, the new item is appended at the top level.
	Ctrl-Alt-I	
Add Sub-task	Ctrl-Shift-I	Dropdown box to create a sub-task or -milestone. The new item is appended as a child to the currently selected item.
	Ctrl-Shift-Alt-I	
Delete Task	Delete	Deletes the selected tasks.

## 3.7 Task Dependency Editor (List)

### 3.7.1

**NOTE**  
This view is not shown by default. For large projects, it can impact performance severely

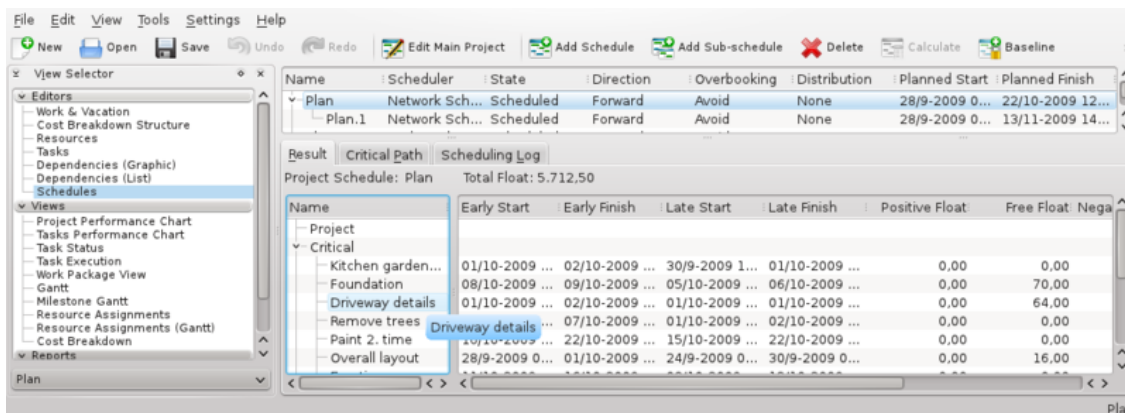
It can be activated using the [View Selector](#) context menu.

## 3.8 Schedules Editor

### 3.8.1

#### 3.8.1.1 Description

The Schedule Editor is used to create, edit, calculate and delete schedules.



## The Plan Handbook

The Schedule Editor has three sub-views that show the results of the scheduling.

The Result sub-view shows the values needed for PERT analysis including early start and -finish, late start and -finish along with different types of float.

Name	Early Start	Early Finish	Late Start	Late Finish	Positive Float	Free Float	Negative Float	Start Float	Finish
Project									
Critical									
Kitchen garden details	01/10-2009 ...	02/10-2009 ...	30/9-2009 1...	01/10-2009 ...	0,00	0,00	0,00	0,00	
Foundation	08/10-2009 ...	09/10-2009 ...	05/10-2009 ...	06/10-2009 ...	0,00	70,00	0,00	0,00	
Driveway details	01/10-2009 ...	02/10-2009 ...	01/10-2009 ...	01/10-2009 ...	0,00	64,00	0,00	0,00	
Remove trees	06/10-2009 ...	07/10-2009 ...	01/10-2009 ...	02/10-2009 ...	0,00	0,00	0,00	0,00	
Paint 2. time	16/10-2009 ...	22/10-2009 ...	15/10-2009 ...	22/10-2009 ...	0,00	0,00	0,00	0,00	
Overall layout	28/9-2009 0...	01/10-2009 ...	24/9-2009 0...	30/9-2009 0...	0,00	16,00	0,00	0,00	
Erection	11/10-2009 ...	16/10-2009 ...	08/10-2009 ...	12/10-2009 ...	0,00	0,00	0,00	0,00	
Guest house	05/10-2009 ...	06/10-2009 ...	05/10-2009 ...	05/10-2009 ...	0,00	0,00	0,00	0,00	
Guest house details	01/10-2009 ...	05/10-2009 ...	01/10-2009 ...	01/10-2009 ...	0,00	16,00	0,00	0,00	
Playground details	01/10-2009 ...	05/10-2009 ...	30/9-2009 1...	01/10-2009 ...	0,00	0,00	0,00	0,00	
Remove top soil	07/10-2009 ...	08/10-2009 ...	02/10-2009 ...	05/10-2009 ...	0,00	0,00	0,00	0,00	
Garden details	01/10-2009 ...	06/10-2009 ...	30/9-2009 0...	01/10-2009 ...	0,00	0,00	0,00	0,00	

The Critical Path sub-view shows the tasks that belong to the critical path.

Name	Duration	Variance (Dur)	Optimistic (Dur)	Pessimistic (Dur)	Estimate	Expected	Variance (Est)	Optimistic	Pessimistic
Overall layout	3,3d	0,00	3,3d	3,3d	4,0d	4,0d	0,00	4,0d	4,0d
Driveway details	68,0h	0,00	68,0h	68,0h	4,0h	4,0h	0,00	4,0h	4,0h
Design finished					0,0h	0,0h	0,00	0,0h	0,0h
Remove trees	16,0h	0,00	16,0h	16,0h	16,0h	16,0h	0,00	16,0h	16,0h
Remove top soil	6,0h	0,00	6,0h	6,0h	12,0h	12,0h	0,00	12,0h	12,0h
Path	0,0h	0,0							

The Scheduling Log sub-view shows a list of messages produced during scheduling.

Name	Scheduler	State	Direction	Overbooking	Distribution	Planned Start	Planned Finish
Plan 5	Ti-skemalä...	Scheduled	Backwards	Avoid	None	28/9-2009 1...	01/11-2009 00:00







Name	Phase	Severity	Message
John's Garden	Init	Info	Schedule project from end time: 01/11-2009 00:00
Driveway de...	Init	Warning	Dependency type 'As Soon As Possible' not handled. Using FinishStart.
Paint 2. time	Init	Warning	Dependency type 'As Soon As Possible' not handled. Using FinishStart.
Paint 2. time...	Init	Warning	Dependency type 'As Soon As Possible' not handled. Using FinishStart.
Paint 1. time	Init	Warning	Dependency type 'As Soon As Possible' not handled. Using FinishStart.
John's Garden	Schedule	Info	Start scheduling
John's Garden	Update	Info	Scheduling finished, update project
Playground	Update	Info	Scheduled task: 26/10-2009 11:00 - 26/10-2009 13:00
Kitchen gard...	Update	Info	Scheduled task: 02/10-2009 13:00 - 05/10-2009 09:00
Driveway del...	Update	Info	Scheduled milestone: 28/10-2009 09:00
Foundation	Update	Info	Scheduled task: 13/10-2009 09:00 - 13/10-2009 13:00
Trees and b...	Update	Info	Scheduled task: 29/10-2009 14:00 - 30/10-2009 16:00
New foundat...	Update	Info	Scheduled task: 29/10-2009 09:00 - 29/10-2009 12:00
Driveway	Update	Info	Scheduled task: 27/10-2009 14:00 - 28/10-2009 09:00

### 3.8.1.2 Toolbar

The toolbar provides the means to create, delete and calculate schedules:



## The Plan Handbook

Button	Shortcut	Description
 Add Schedule	<b>Ctrl-I</b>	Button to create a resource group. The new group is appended at the end of the groups.
 Add Subschedule	<b>Ctrl-Shift-I</b>	Button to create a sub-schedule. The new schedule is appended as a child to the currently selected schedule.
 Delete	<b>Delete</b>	Deletes the selected schedule.
 Calculate		Calculates the selected schedule.
 Baseline		Baselines the selected schedule. Prevents the schedule from being re-calculated or deleted.
 Detach		Make the selected sub-schedule a top schedule

### 3.8.1.3 Editing data

Data can be edited in-line as described [here](#).

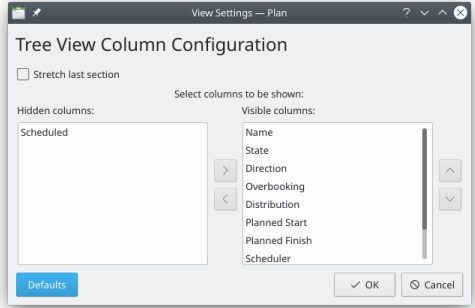
The following columns are displayed as default:

Column	Description
Name	The name of the schedule.
State	The schedules state. Shows a progress bar during scheduling.
Direction	The scheduling direction. If the direction is Forward, the project is scheduled starting at the project's earliest start time specified in the main project dialog. If the direction is Backward, the project is scheduled starting at the project's latest finish time specified in the main project dialog.

## The Plan Handbook

Overbooking	<p>Controls resource overbooking when scheduling.</p> <p>If overbooking is allowed, a resource may be booked (on working days) to work more than it is available. This can happen if the resource is allocated to multiple tasks or are booked on other projects.</p> <p>If overbooking is to be avoided, resources will not be booked more than they are available. On resource conflict, tasks will be delayed until the resource is available.</p>
Distribution	<p>The distribution to be used during scheduling.</p> <p>If the distribution is 'None', the estimate of the task is used as-is during scheduling.</p> <p>If the distribution is 'PERT', the estimate (E) used is calculated based on the entered optimistic- (O), pessimistic-(P) and most likely (M) estimate. The formula used for this is:</p> $E = (O + 4 * M + P) / 6.$
Planned Start	The scheduled start time.
Planned Finish	The scheduled finish time.
Scheduler	<p>The scheduler used for calculating the project schedule.</p> <p>The default built-in scheduler is the Network Scheduler.</p>

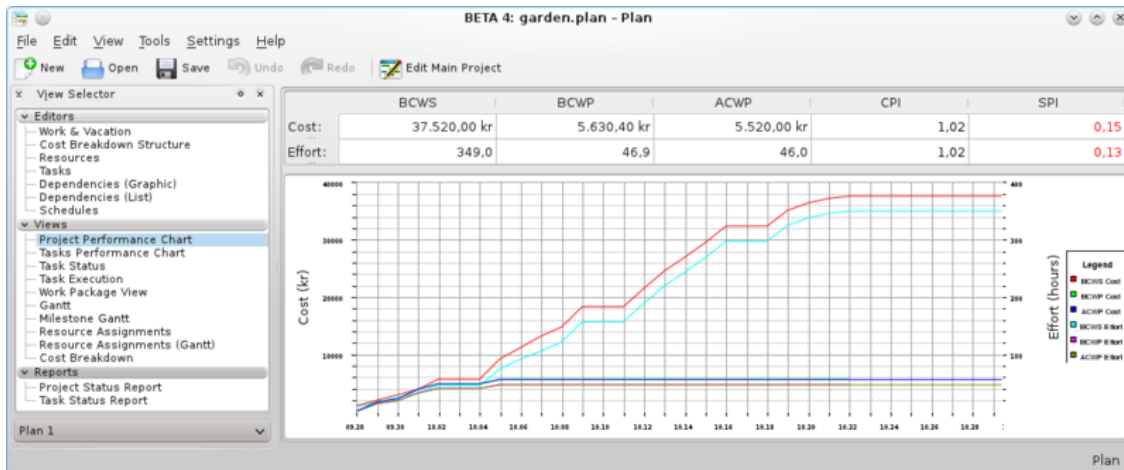
### 3.8.1.4 Configuration

<p>Using the context menu, the view can be configured to split/ unsplit the tree view or it can be configured using the configure dialog.</p> <p>The configure dialog enables you to tailor the amount of information the view displays to fit your needs.</p>	
--	--

## 3.9 Project Performance View

### 3.9.1 Description

The Project performance view is a project management chart where can be understood the actual situation of the project according to the Earned Value Method.



where:

- BCWS means Budgeted Cost Work Scheduled,
- BCWP means Budgeted Cost Work Performed,
- ACWP means Actual Cost Work Performed.

All these are considered as effort in hours and costs. PI are the Performance Indexes, where:

- CPI is the Cost Performance Index,
- SPI is the Schedule Performance Index.

## 3.10 Task Performance View

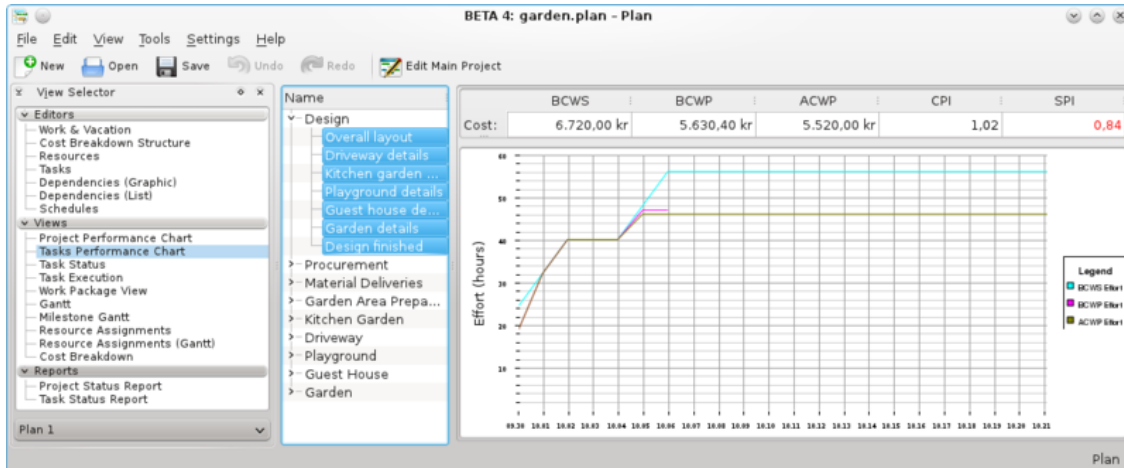
### 3.10.1

On the task performance chart, we can analyze deeply each subtask or task with the same indexes as for the project performance view.

This is really useful in a long and complicated project.

On the left window, you can choose every single sub-task as well as an entire task, then on the right window will appear in the corresponding chart.

## The Plan Handbook



where:

- BCWS means Budgeted Cost Work Scheduled,
- BCWP means Budgeted Cost Work Performed,
- ACWP means Actual Cost Work Performed.

All these are considered as effort in hours and costs. PI are the Performance Indexes, where:

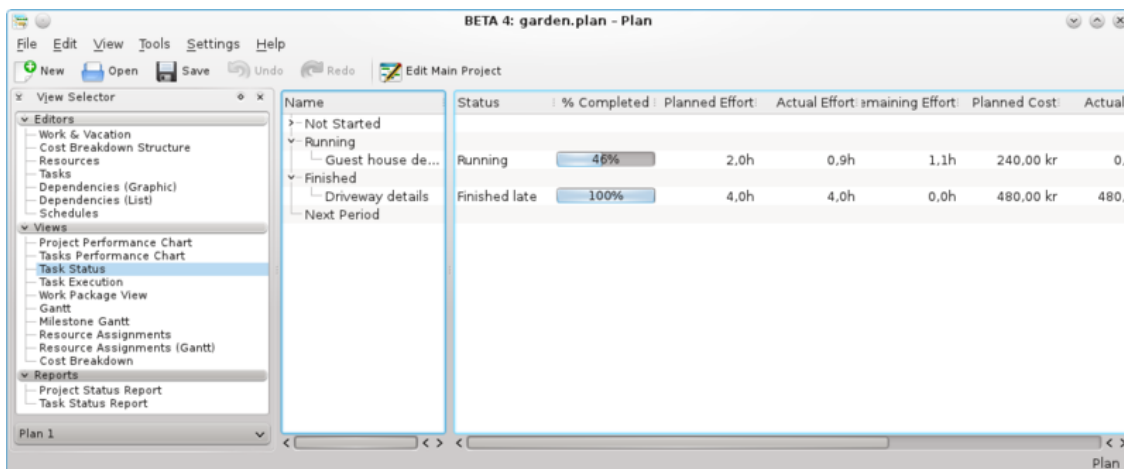
- CPI is the Cost Performance Index,
- SPI is the Schedule Performance Index.

## 3.11 Task Status View

### 3.11.1

#### 3.11.1.1 Description

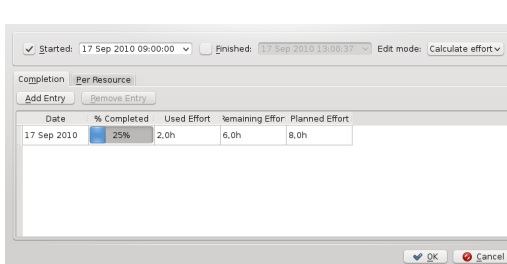
The Task Status View is used to inspect task progress information at a period, set in the configuration.



The tasks are divided into groups dependent on the status of the task:

Not Started	Tasks that should have been started by now.
Running	Tasks that have been started, but not yet finished.
Finished	Tasks that were finished in this period
Next Period	Tasks that are scheduled to be started in the next period.

### 3.11.1.2 Editing data

<p>Progress information can be edited in-line as described <a href="#">here</a> or by using the task progress dialog.</p>	
---	--

The following columns are displayed as default:

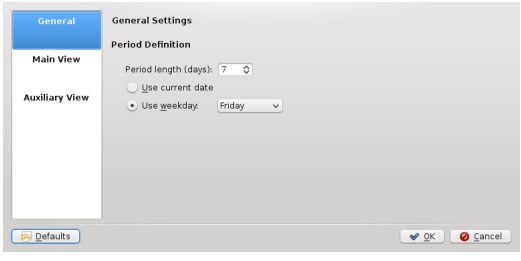
Column	Description
Name	The name of the task.
Status	Task status
% Completion	Task completion
Planned Effort	The amount of work planned to be used at the end of the current period.
Actual Effort	The amount of work spent.
Remaining Effort	The remaining effort needed to complete the task.
Planned Cost	The planned cost at the end of the current period.
Actual Cost	The actual cost incurred.
Actual Start	The actual start time of the task.
Actual Finish	The actual finish time of the task.

### 3.11.1.3 Configuration

Using the context menu, the view can be configured to split / unsplit the tree view or it can be configured using the configure dialog.

## The Plan Handbook

The configure dialog enables you to tailor the amount of information the view displays to fit your needs.



## 3.12 Task Execution View

### 3.12.1

#### 3.12.1.1 Description

The Task Execution View is used to inspect task performance information.

Name	Status	% Completed	Responsible	Assignments	SPI	BCWS	B
Design					0.84	6.720 kr	5.6
Overall layout	Finished early	100%	Archie		1.00	3.840 kr	3.8
Driveway details	Finished late	100%	Archie		1.00	480 kr	4
Kitchen garden ...	Finished late	100%	Archie		1.00	480 kr	4
Playground det...	Finished early	100%	Archie		1.00	720 kr	7
Guest house de...	Running	46%	Archie		0.46	240 kr	1
Garden details	Can start	0%	Archie		0.00	960 kr	
Design finished	Cannot start	0%			1.00	0 kr	
Procurement					0.00	3.000 kr	
Material Deliveries					1.00	0 kr	
Garden Area Prepa...					0.00	1.400 kr	
Kitchen Garden					0.00	2.600 kr	
Driveway					0.00	3.000 kr	
Playground					0.00	3.800 kr	
Guest House					0.00	9.600 kr	
Garden					0.00	7.400 kr	

#### 3.12.1.2 Data

Progress information can be edited in-line as described [here](#) or by using the task progress dialog.

Date	% Completed	Used Effort	Remaining Effort	Planned Effort
17 Sep 2010	25%	2.0h	4.0h	8.0h

The following columns are displayed as default:

Column	Description
Name	The name of the task.

## The Plan Handbook

Status	Task status
% Completed	Task completion
Responsible	The person responsible for this task.
Assignment	The resources assigned to this task.
SPI	Schedule Performance Index. (BCWP / BCWS)
BCWS	Budgeted Cost of Work Scheduled.
BCWP	Budgeted Cost of Work Performed.
ACWP	Actual Cost of Work Performed.
Description	Task description

### 3.12.1.3 Configuration

Using the context menu, the view can be configured to show / hide the Project, split / unsplit the tree view or it can be configured using the configure dialog.

The configure dialog enables you to tailor the amount of information the view displays to fit your needs.

## 3.13 Task Gantt View

### 3.13.1

#### 3.13.1.1 Description

The Gantt view is used to show tasks in a timeline.

*Gantt View*

*Gantt View*

#### 3.13.1.2 Editing data

Task description and progress can be edited using the context menu.

The following columns are displayed as default:

Column	Description
Name	The name of the task.
Start Time	The scheduled start time.
End Time	The scheduled end time.
% Completed	Completion

### 3.13.1.3 Configuration

Using the context menu, the view can be configured using the configure dialog. The configure dialog enables you to tailor the amount of information the view displays to fit your needs.	Configuration Dialog  <i>Configuration Dialog</i>
--	---

## 3.14 Milestone Gantt View

### 3.14.1

#### 3.14.1.1 Description

The Milestone Gantt view is used to show milestones in a time line.

Gantt View

*Gantt View*

#### 3.14.1.2 Editing data

Milestone description and progress can be edited using the context menu.

The following columns are displayed as default:

Column	Description
WBS Code	The Work Breakdown Structure code
Name	The name of the milestone.
Start Time	The scheduled start time.

### 3.14.1.3 Configuration

Using the context menu, the view can be configured using the configure dialog. The configure dialog enables you to tailor the amount of information the view displays to fit your needs.	Configuration Dialog  <i>Configuration Dialog</i>
--	---



## 3.15 Resource Assignment Gantt View

### 3.15.1

#### 3.15.1.1 Description

The Resource Assignment View displays the scheduled task-resource assignments in a table.

<p><b>NOTE</b> This view can severely impact performance in large projects.</p>
---

#### 3.15.1.2 Data

The following columns are displayed as default:

Column	Description
Name	The name of the object (Resource group, resource, task)
Total	The total assignment for a resource
Dates	The total assignments for a resource per day and the assignments for the resource per task.

#### 3.15.1.3 Editing data

The task description and progress can be edited using the context menu.

#### 3.15.1.4 Configuration

<p>Using the context menu, the view can be configured using the configure dialog. The configure dialog enables you to include or exclude assignments.</p>	<p>Configuration Dialog <i>Configuration Dialog</i></p>
---	---

## 3.16 Resource Assignment View

### 3.16.1

#### 3.16.1.1 Description

The Resource Assignment Gantt View displays the scheduled task-resource assignments in a Gantt chart.

### 3.16.1.2 Data

The following columns are displayed as default:

Column	Description
Name	The name of the object (Resource group, resource, task)
Type	Object type
Start Time	The start of the assignment
End Time	The end of the assignment

### 3.16.1.3 Editing data

The task description and progress can be edited using the context menu.

### 3.16.1.4 Configuration

Using the context menu, the view can be configured using the configure dialog. The configure dialog enables you to select which columns to display.	<p>Configuration Dialog</p> <p><i>Configuration Dialog</i></p>
---	--

## Chapter 4

# Reports

### 4.1 Reports Generator View

#### 4.1.1

##### 4.1.1.1 Description

The Reports Generator View is used to add and generate reports in Open Document Text (odt) format.

The reports can be based on the supplied report templates, or you can [write your own templates](#).

Column	Description
Name	A name of your choice
Report Template	Path to the report template file. You can select one of the supplied standard templates or you can enter the filename of a template you provide yourself.
Report File	The name of the file that will be generated.
Add	Information that can be added to the report file name to distinguish it from previously generated versions. This can be: <ul style="list-style-type: none"> <li>• <i>Nothing</i>; use the filename as is</li> <li>• <i>Number</i>; add a sequence number to the file name</li> <li>• <i>Date</i>; add the current date to the file name</li> </ul>

##### 4.1.1.2 Toolbar

The toolbar provides the means to add, remove and generate reports.

## The Plan Handbook

<b>Button</b>	<b>Shortcut</b>	<b>Description</b>
Add Report	<b>Ctrl-I</b>	Add a new report
Remove Report	<b>Ctrl-D</b>	Remove the selected report
Generate Report	<b>Ctrl-G</b>	Generate the selected report

## Chapter 5

# Credits and License

Documentation Copyright see the UserBase [Plan page history](#)

This documentation is licensed under the terms of the [GNU Free Documentation License](#).